

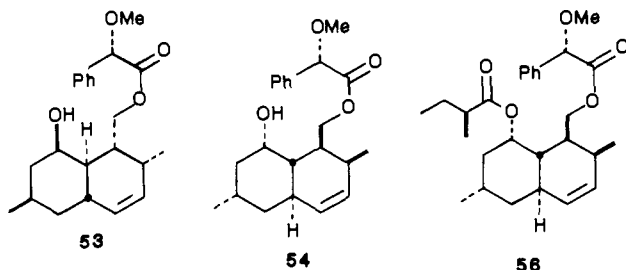
Additions and Corrections

Total Synthesis of (+)-Dihydromevinolin [*J. Am. Chem. Soc.* **1986**, *108*, 4586-4594]. SCOTT J. HECKER and CLAYTON H. HEATHCOCK*

The use of a sample of (*S*)-(+)-*O*-methylmandelic acid incorrectly labeled as (*R*)-(+)-*O*-methylmandelic acid resulted in several text and structure errors in this publication.

Abstract, page 4586, line 7 should read: Selective DCC-promoted esterification with (*S*)-(+)-*O*-methylmandelic acid ...

Body, page 4590, Scheme IX, and page 4591, eq 4: The structures of compounds **53**, **54**, and **56**, drawn originally with the (*R*)-isomer of the resolving agent, are shown correctly below. Reagent (g) in Scheme IX should read: (*S*)-(+)-PhCH(OMe)CO₂H.



Page 4590, column 2, line 14 should read: Selective esterification of **52** with (*S*)-(+)-*O*-methylmandelic acid ...

Page 4591, column 1, line 11 should read: The (*S*)-*O*-methylmandelate ester would be expected ...

Page 4591, footnote 26 refers the reader to a paper by G. Barth et al. *J. Am. Chem. Soc.* **1970**, *92*, 875; footnote 20 of the Barth paper incorrectly reports that (*S*)-(-)-methyl *O*-methylmandelate has $[\alpha]^{25} -124^\circ$ (neat). Our footnote 26 should read: (*S*)-(+)-*O*-Methylmandelic acid has $[\alpha]^{25} +151^\circ$ (see ref 33 this paper).

Experimental Section, page 4593, column 1: The name of compounds **53** and **54** should read: (1*S*,2*S*,4*R*,5*S*,6*S*,7*R*,8*S*,8*a**S*)-1,2,4*a*,5,6,7,8,8*a*-octahydro-2,6-dimethyl-8-hydroxy-1-([(S)-(*O*-methylmandelyloxy)methyl)naphthalene.

Page 4593, column 1, line 33 should read: To a stirring solution of diol **52** ..., (*S*)-(+)-*O*-methylmandelic acid ... and DMAP ... was added ...

Page 4593, column 1: The name of compound **56** should read: (1*S*,2*S*,4*R*,6*S*,8*S*,8*a**S*)-1,2,4*a*,5,6,7,8,8*a*-octahydro-2,6-dimethyl-8-[(S)-(2-methylbutyryloxy)-1-([(S)-(*O*-methylmandelyloxy)methyl)naphthalene.

Tetratellurafulvalene (TTeF) [*J. Am. Chem. Soc.* **1987**, *109*, 4115-4116]. RICHARD D. MCCULLOUGH, GAIK B. KOK, KNUD A. LERSTRUP, and DWAIN O. COWAN

We were remiss in not citing Hünig and co-workers as one of the groups to first prepare tetrathiafulvalene (TTF).¹ We regret this oversight.

Page 4116, column 1, line 12: The temperature -20°C , should read -70°C .

(1) (a) Zahradnik, R.; Carsky, P.; Hünig, S.; Kiesslich, G.; Scheut-zow, D. *Int. J. Sulfur Chem.* **1971**, *6*, 109. (b) Kiesslich, G. Ph.D. Dissertation, University of Würzburg, 1968. (c) Hünig, S.; Kiesslich, G.; Quast, H.; Scheut-zow, D. *Liebigs Ann. Chem.* **1973**, 310.

Characterization of an Endogenous Factor Controlling the Cell Cycle of Complex Tissues [*J. Am. Chem. Soc.* **1987**, *109*, 5858-5859]. DAVID G. LYNN,* KEEVE JAFFE, MICHAEL CORNWELL, and WILLIAM TRAMONTANO

Page 5858: In the published communication Michael Cornwell's name was misspelled as Cornwall.

Computer Software Reviews

Graph-Pad Graph Plotter and Digitizer. By Harvey Motulsky. Academic Press, Inc.: Orlando, FL 32887. List price \$340.00.

Graph-Pad is a program designed to enter, display, manipulate, and plot data on standard plotters (such as the IBM 7371, IBM 1742, HP 7470A, or HP 7475a) with use of the IBM PC or other compatible microcomputers. The hardware requirements of the program are an IBM PC, XT, or AT with at least 256K of memory and a serial port (or equivalent). Also requires is PC-DOS or MS-DOS system software. The software is copy protected, requiring insertion of the master disk on startup although backup copies are able to perform all functions other than actual plotting.

Data for plotting may be entered via the keyboard by using a spreadsheet type input, via the plotter itself through digitizing by using existing diagrams, or from another program. The program can graph data as a curve in various line styles, as points using different symbols, with error bars, or as bar graphs. Options are included to position and size the graph and its axes. Labels may be placed anywhere on the graph and may use subscripts, superscripts, and special characters. Data once entered, either from the spreadsheet or digitized input, may be conveniently saved to or read from a disk.

Graph-Pad is unusually easy to use. Menus are displayed with an effective use of highlighting or color and positioning on the screen. The commands are easily selected from the keyboard with a single keystroke. Commands need not be learned and the program is laid out so that a plot may be constructed in minutes. The organization of the menus make the manual, although well written, essentially unnecessary. The spreadsheet input of the data is very logical for this type of program and quite simple, allowing easy data entry and updating. The data may be previewed directly on the screen, and the *x* and *y* values may be transformed under several common functions. A least-squares straight line fit (unfortunately this is the only curve fitting ability of the program) may also be done, and several types of curves may be plotted. When the data have been

manipulated the actual plot may be set up with a large selection of parameters, and default values for all parameters are automatically shown. This allows flexibility for most conceivable plotting requirements.

This package has many useful features for both the academic and industrial scientist. In fact anyone with raw data can produce professional quality plots with minimal effort and experience. The only negative aspects are the following: (i) The package contains very few statistical capabilities for curve fitting data. The package can only fit to straight lines, although this can be remedied by interfacing the package with a statistical analysis program. The inclusion of a statistical analysis capability would greatly enhance the value of this package. (ii) The method of plotting more than one curve per graph is awkward. Multiple curve plots can only be produced by loading in each curve and initiating the plot sequence individually. However, both of these limitations do not decrease the general usefulness of this package. Users with some programming experience will find that these limitations can be over come by interfacing the package with other programs. By writing short programs to interface with this package, we were able to use it in all our plotting applications.

Graph-Pad is a useful scientific plotting package with flexibility which allows it to be used in many applications. With the addition of a statistical analysis capability this package would be a must for anyone who uses a plotter.

Loudon L. Campbell and James C. Crump, *The University of Texas at Austin*

Omnis 3. Blyth Software: 2929 Campus Drive, Suite 425, San Mateo, CA 94403. \$495.00; copy protected.

Omnis 3 is by far the most comprehensive and powerful relational database system this reviewer has seen for the Macintosh. The features of Omnis 3 are comparable to or surpass the standards set by dBase III and R:base 5000 for the IBM microcomputer. If you need nothing more than simple manuscript tracking or mailing list maintenance, there are